



THE P4

FREESTANDING PELLET STOVE

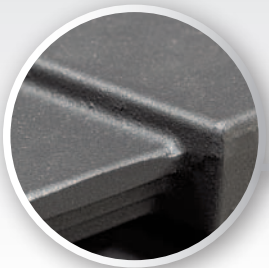
Hand Welded Heat Exchanger

The P4 features a hand welded heat exchanger with a large surface area for increased efficiency.



European Castings

European made castings give the P4 a classic look and feel.



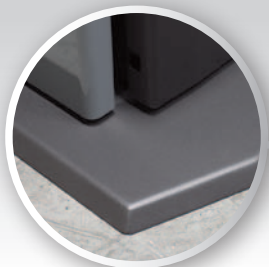
Fluted Liner

The firebox uses a durable heavy gauge stainless steel fluted liner that will hold up to the heat and look great for years to come.



Hearth Pad

The included hearth pad is full adjustable and can even be removed for use on non combustible flooring.



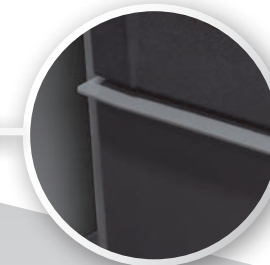
Large Hopper

The P4 is equipped with a hefty 80lb capacity pellet hopper that eliminates the need for repetitive refills.



Total Control

The "Comfort Level" control system uses an internal thermostat to accurately maintain the heat output to your desired setting.



Large Ash Pan

Spend less time working and more time relaxing. The P4's large ash pan lets you go longer between cleanings.



Choice of Color

The side panels and drawer lip are available in painted black, enameled modern grey, and enameled racing red.

